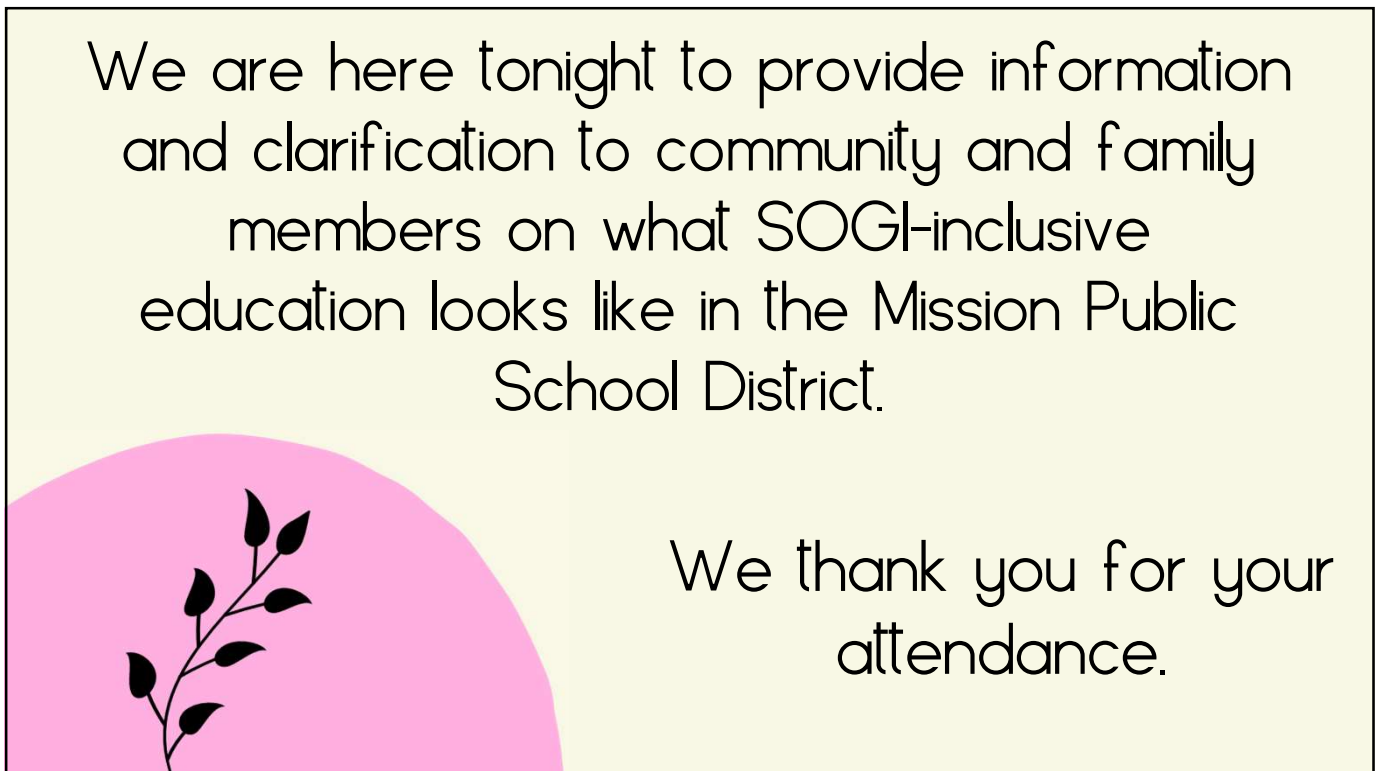


SOGI MYTH BUSTERS

Shannon Greig, Krysta Hamm, Sharon Widdows
November 28, 2023

1

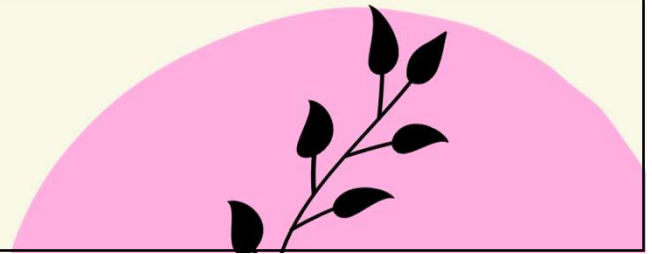


We are here tonight to provide information and clarification to community and family members on what SOGI-inclusive education looks like in the Mission Public School District.

We thank you for your attendance.

2

SOGI-centered education is **NOT**
centered in sexuality.



3

MPSD


The MPSD is committed to ensuring every classroom is welcoming and that all students and staff feel safe and supported.



4

MPSD

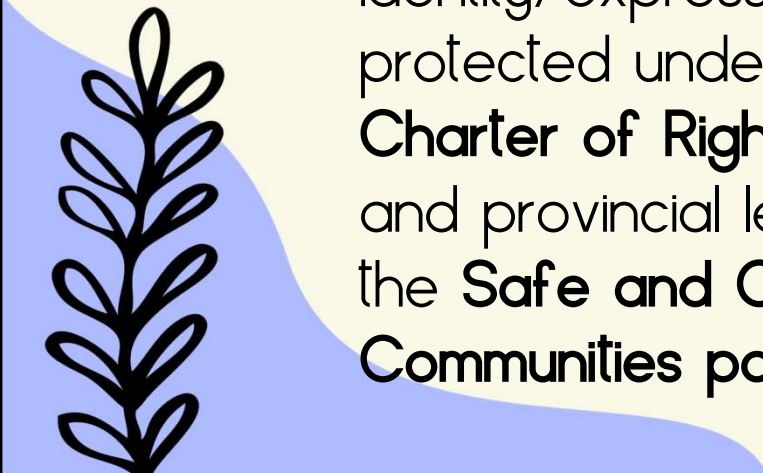
Employees of the MPSD are committed to acceptance, inclusion, and working in a welcoming community. They are bound by the **BC Human Rights Code**, as employees, which protects sexual orientation, gender identity, AND gender expression.



5

PROTECTIONS

Sexual orientation and gender identity/expression are also protected under **the Canadian Charter of Rights and Freedoms**, and provincial legislation, including the **Safe and Caring School Communities policy**.



6

OUR COMMITMENT

We fully support educators and schools as they integrate **age-appropriate** references to diversity in sexual orientation and gender identity.

This fosters dignity and respect while reducing incidents of violence and discrimination against 2SLGBTQ+ peoples.

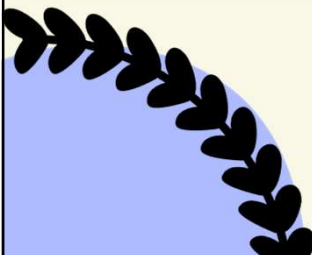


7

MYTH: SOGI-inclusive education promotes a specific sexual orientation or gender identity

FACT: SOGI-inclusive education does **NOT** promote any specific identity and is designed to create a safe and inclusive environment for all. It combats discrimination by **providing representation** of all types of people in classroom resources and enhancing awareness of experiences and challenges faced by 2SLGBTQ+ peoples.


8



MYTH: SOGI-inclusive resources are inappropriate and have explicit content.

FACT: There is **NO** pornographic or explicit content in any SOGI-inclusive resources. SOGI-inclusive education addresses topics like **identity, family diversity, stereotypes, bullying, and name calling.**

9



MYTH: SOGI-inclusive education violates parents' rights.

FACT: SOGI-inclusive education is meant to complement parents' efforts in teaching **essential values of tolerance, respect, and acceptance** of all people. It contributes to a greater understanding of diversity and inclusion.

10

MYTH: SOGI-inclusive education is about "recruiting" students to be 2SLGBTQ+

FACT: This is a baseless myth. SOGI-inclusive education aims to **create acceptance and inclusion**; it does not seek to influence students' identities. Teachers greatly value the unique individual identities of students.

11

MYTH: SOGI-inclusive education is the same thing as sexual health education.

FACT: SOGI is a distinct topic from sexual health education. SOGI-inclusive education aims to **promote understanding, inclusivity**, and support for all students.



12

FACT:

Sexual health education is a part of BC's Physical and Health Education curriculum and focuses on the **biological, physiological, and reproductive** aspects of human sexuality. It is taught separately. Parents and guardians may consult with their school and arrange for alternative delivery for certain topics.



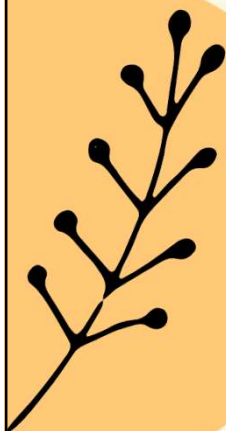
13

MYTH:

SOGI-inclusive education is inappropriate for students.

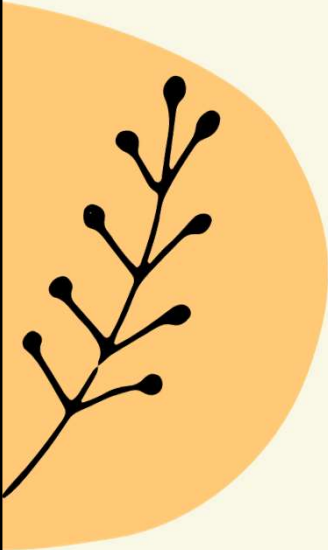
FACT:

ALL students learn about respect, compassion, and diversity, while more complex topics like discrimination and injustice may be explored later in a developmentally and age-appropriate manner.



14

FACT:



SOGI-inclusive resources play a pivotal role in addressing fundamental human ideals like diversity, acceptance, and a sense of belonging.

SOGI-inclusive education is essential for **every child**.

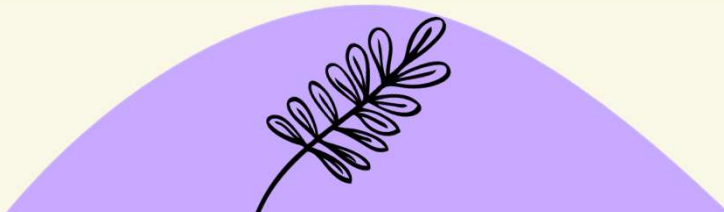
15

MYTH:

SOGI-inclusive education is a recent and controversial addition to education.

FACT:

SOGI-inclusive education, like the inclusion of diverse cultures and races, has been a part of the broader goal for diversity and inclusion in our schools for **decades**.




16

FACT: Although SOGI has gained increased attention recently, it is **not a new concept** and is supported by educational organizations, school districts, and child development and health experts. SOGI is also protected legally.



17


MYTH: SOGI-inclusive education is not needed because these issues are not relevant to all students.



FACT: These issues are relevant to **every single student**. SOGI-inclusive education is intended to foster inclusivity and respect, address issues of discrimination and bullying, and build understanding and empathy.

18


FACT:



Furthermore, 2SLGBTQ+ students and staff are **members of our school communities** and often face unique challenges related to identity.

19

FACT:



Studies show that having inclusive classrooms and SOGI-specific anti-bullying policies improves school climate, and reduces discrimination, depression, anxiety, substance use, suicide ideation, and suicide attempts for **ALL** students.

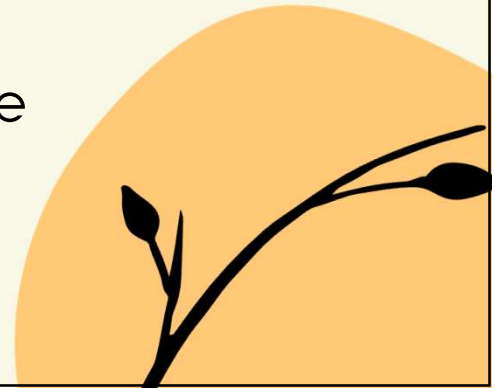
20

MYTH:

School libraries have books that are not safe for children.

FACT:

Our school district has **comprehensive policies** that guide teacher librarians when selecting books for school libraries.



21

MYTH:

SOGI-inclusive education encourages students to transition to a different gender.

FACT:

The role of districts does **not** include decision-making about students' gender exploration or transition.



22

MYTH: Gender affirming care can be done in secret.

FACT: Gender-affirming care **requires parental consent** for those under age. It often involves specialist assessments and lengthy wait times of multiple years, and **does not happen in schools.**



23

MYTH:

Letting transgender people use the correct bathroom is a safety risk to cisgender people.

FACT:

In studies, there has been **no evidence that transgender people pose any danger** to cisgender people in bathrooms. In fact, studies show transgender people are far more likely to be sexually assaulted in a bathroom.



24



MYTH: SOGI-inclusive education is "grooming" students.

FACT: This is **conflating the act of teaching self-acceptance with brainwashing.** It ignores the need for diversity and inclusive education that 2SLGBTQ+ adults say would have helped them when they were younger.

25

MYTH: Schools are keeping SOGI-inclusive education a secret from families.

FACT: Our schools encourage students to share their learning with families. We want all families to support their children and schools in teaching respect and inclusion.



26

THANK YOU!

A big thank you to Surrey School District for the resources that supported this presentation, and to the SOGI supporters in MPSD that always put our students first.

